

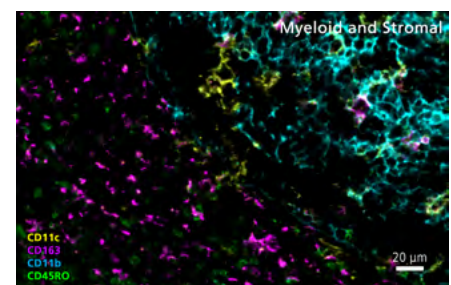
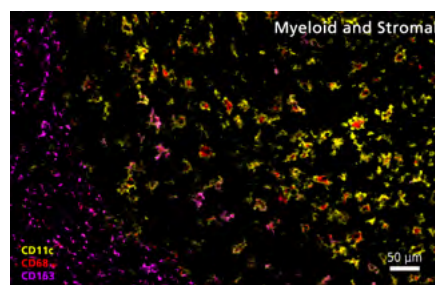
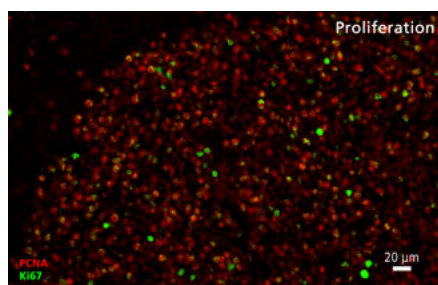
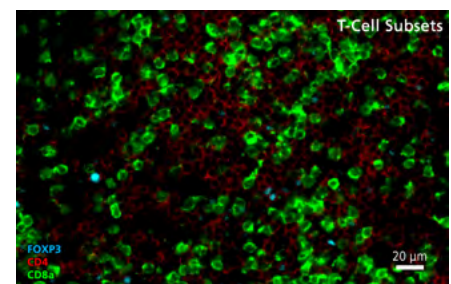
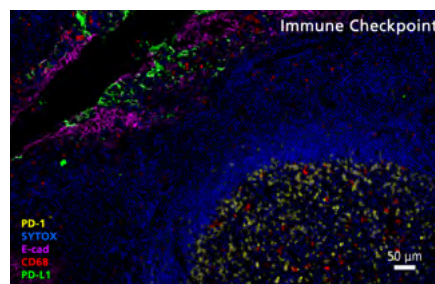
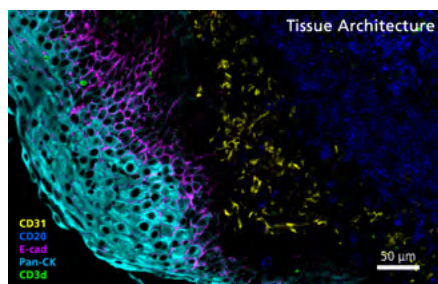
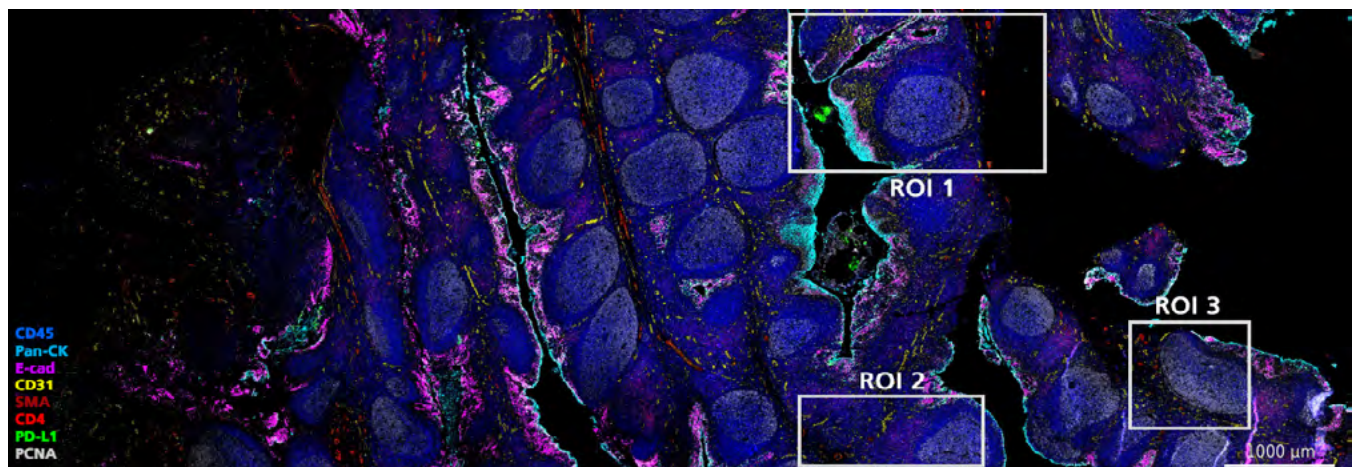
# Orion™ Instrument

## Specification Sheet

### Spatial Biology. Realized.

Orion unlocks highly multiplexed spatial biology by providing biomarker depth and flexibility with the convenience of a rapid, single cycle process.

- High resolution, whole-slide fluorescence imaging system
- Images multiple channels in a single scan in 75 minutes
- Accelerates spatial analysis of tissue microenvironment
- Fits in standard pathology workflows



Whole-slide imaging of a tonsil section stained with Orion reagents. Regions of interest show markers of tissue architecture, immune checkpoint, proliferation in follicles, markers of T-cell subsets, and myeloid and stromal cell markers.

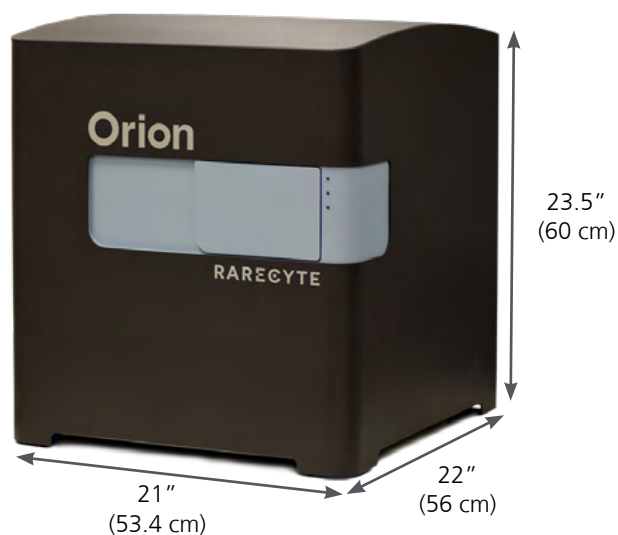
Experience Orion data through an interactive viewer at [rarecyte.com/interactive/](https://rarecyte.com/interactive/).

## Instrument

Specification	Value
Sample compatibility	IF, IHC, H&E
Scan speed	75 mins per cm <sup>2</sup> at 20x
Illumination Lasers	405 nm - 730 nm
Emission	Tunable from 400-890 nm
Slide compatibility	1" x 3" x 1 mm
	25 mm x 75 mm x 1 mm
Slide capacity	2 slides
Slide loading	Manual
Load repeatability	+/- 5.0 µm
Focus	Image-based Autofocus
Objective turret	5-position, automated
Objectives	4x 0.2NA
	10x 0.3NA
	20x 0.75NA
	40x 0.95NA (Optional)
Camera	sCMOS
	2K x 2K pixels
	6.5 µm pixel size
	95% QE 1.0 electron read noise
Safety	Class I LASER Product
File format	16-bit OME .TIFF

## Workstation

Specification	Value
Storage	9 TB scan capacity
Connectivity	10 GB ethernet
OS	Windows 10 Enterprise
Imaging software	✓
Image viewing software	✓
Image annotation	✓
File management	✓
Remote Review	Optional



© 2021 RareCyte, Inc. All rights reserved.

RareCyte, the stylized logo, Orion, and StrataPlex are the trademarks or registered trademarks of RareCyte, Inc. All other trademarks are property of their respective owners. Specifications subject to change without notice.

For Research Use Only. Not for use in diagnostic procedures.

SS-16-01

**RareCyte, Inc**  
2601 Fourth Ave  
Seattle, WA 98121  
855.727.3298  
206.455.9092  
www.rarecyte.com