

CURIOSIS

Celloger® Mini Plus



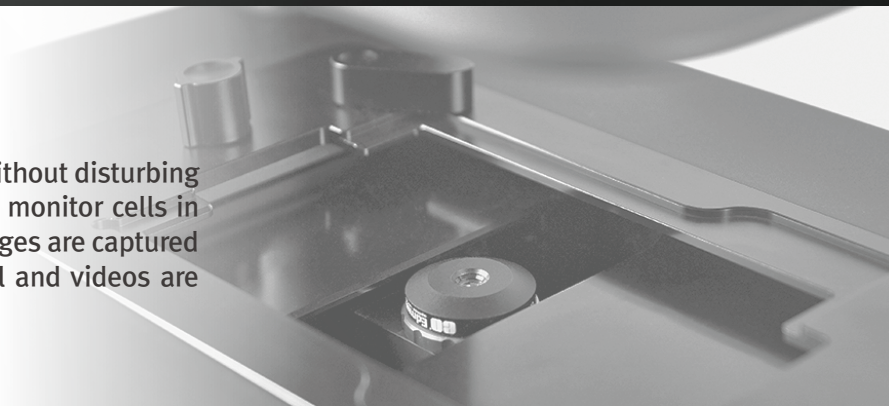
*Real-time automated
live cell imaging system
inside your incubator*

Improve your research productivity by performing real-time cell monitoring and analysis using Celloger® Mini Plus. Perform complex research and data analysis without taking the cells out of the CO₂ incubator, saving your precious time and effort while maintaining the quality of your experiments.



Real-time walk-away monitoring

Remotely monitor live cells inside the incubator without disturbing the environment suitable for cell culture. You can monitor cells in real-time or with the time-lapse function, cell images are captured automatically according to your research protocol and videos are easily made with simple clicks.



Multi-position imaging

Using the motorized stages that travel 117mm x 77mm, x and y axis respectively, multiple points within the travel range can be captured following the schedule (intervals, cycles, total time) set by the researcher.

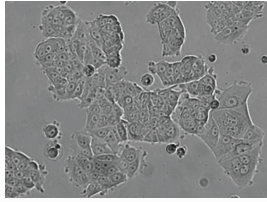
Compatible with various vessel types

With Celloger® Mini Plus, cells cultured in different vessel types can be imaged. Interchangeable vessel holders accommodate various vessel types including well-plate, culture flask, dish, and slide.

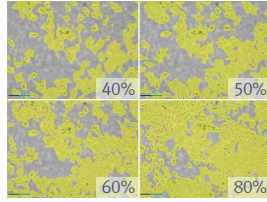


Application of Celloger® Mini Plus

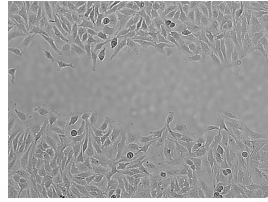
Images taken with Celloger® Mini Plus (4X objectives, bright field & green/red fluorescence)



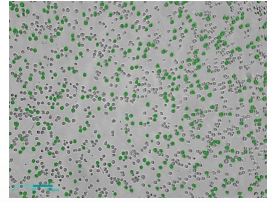
• Cell monitoring



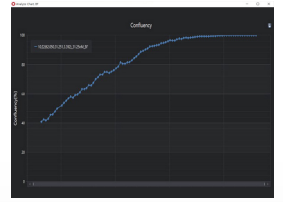
• Cell proliferation



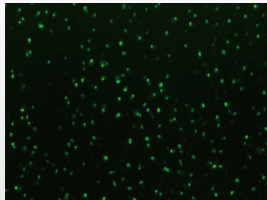
• Wound healing assay



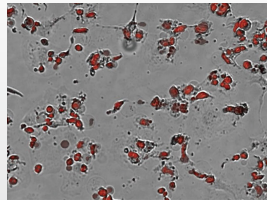
• Coculture monitoring



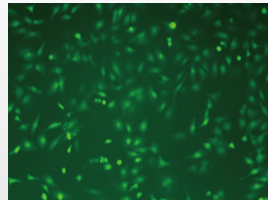
• Cell culture & growth



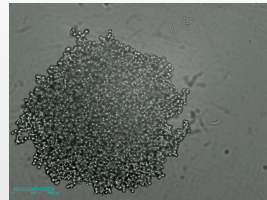
• Apoptosis assay



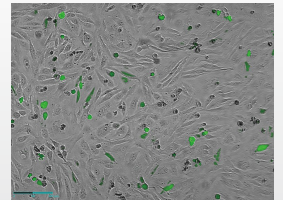
• Cytotoxicity assay



• Reactive oxygen species (ROS) detection



• Spheroid screening assay



• Transfection efficiency assessment



Specification

Dimension	226 x 358 x 215mm
Weight	5.6kg / 12.3lb
Objective Lens	2X / 4X / 10X
Imaging modes	Brightfield, Fluorescence (Green / Red)
Fluorescence	Green : Excitation (470/40x) / Emission (510lp) Red: Excitation (510/84x) / Emission (570lp)
Light source	LED
Camera	5MP CMOS
Stage	Motorized XYZ (camera moving)
Imaging positions	Multiple
Culture vessels	Flask, dish, well plate, slide

Ordering Information | Celloger® Mini Plus

Cat. No.	Description
CRCLG-MPB02	Bright Field, 2X
CRCLG-MPB04	Bright Field, 4X
CRCLG-MPB10	Bright Field, 10X
CRCLG-MPBG04	Bright Field + Green Fluorescence, 4X
CRCLG-MPBG10	Bright Field + Green Fluorescence, 10X
CRCLG-MPBR04	Bright Field + Red Fluorescence, 4X
CRCLG-MPBR10	Bright Field + Red Fluorescence, 10X

Curiosis Inc.

4F, 10, Teheran-ro 38-gil, Gangnam-gu, Seoul 06221, South Korea
+82 2 508 5237 | sales@curiosis.co.kr

www.curiosis.com

