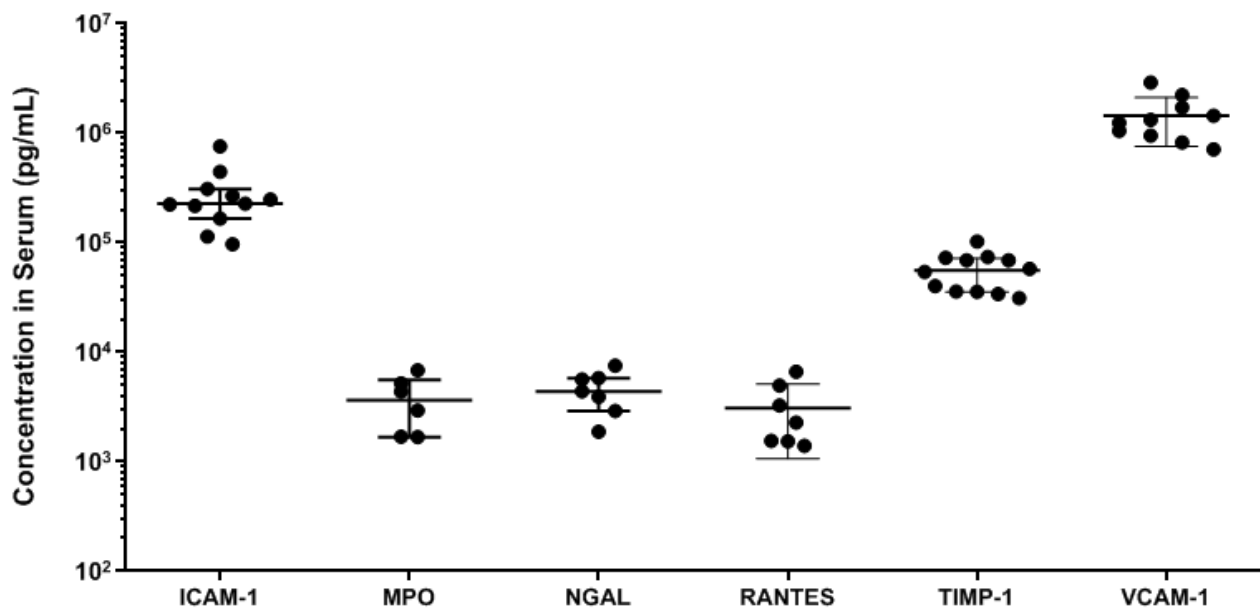


Simoa Planar Array Human Biomarker Panel 1

Catalog Number 85-0006

ICAM-1, MPO, NGAL, RANTES/CCL5, TIMP-1, VCAM-1

The Simoa Planar Array Human Biomarker Panel 1 assay is a multiplex immunoassay designed for the Quanterix SP-X™ Imaging and Analysis system. The assay measures human ICAM-1, MPO, NGAL, RANTES/CCL5, TIMP-1, VCAM-1 in serum and plasma samples. Representative normal healthy sample readings are listed in the graph below along with the limit of detection (LoD) and limits of quantitation (LLoQ and ULoQ) for each biomarker in the assay. Simoa assay kits are available for any combination of the biomarkers in the panel from 1-plex to 6-plex.



Human Biomarker 6-plex Panel 1

| | ICAM-1 | MPO | NGAL | RANTES | TIMP-1 | VCAM-1 |
|--------------|--------|-------|-------|--------|--------|--------|
| LoD (pg/ml) | 5.5 | 0.9 | 0.014 | 23.3 | 0.2 | 1 |
| LLoQ (pg/ml) | 43.8 | 2.6 | 0.2 | 52.1 | 0.5 | 6.3 |
| ULoQ (pg/ml) | 5,600 | 2,000 | 125 | 16,000 | 500 | 6,300 |