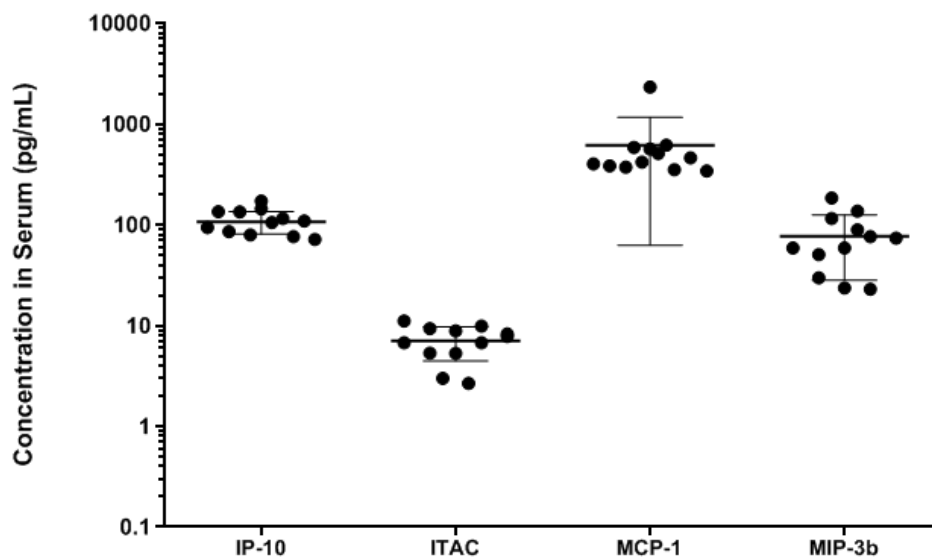


# Simoa Planar Array Human Chemokine Panel 1

Catalog Number 88-5002

## IP-10, ITAC, MCP-1, MIP-3β

The Simoa Planar Array Human Chemokine Panel 1 assay is a multiplex immunoassay designed for the Quanterix SP-X™ Imaging and Analysis system. The assay measures human IP-10, ITAC, MCP-1 and MIP-3β in serum and plasma samples. Representative normal healthy sample readings are listed in the graph below along with the limit of detection (LoD) and limits of quantitation (LLoQ and ULoQ) for each biomarker in the assay. Simoa assay kits are available for any combination of the biomarkers in the panel from 1-plex to 4-plex.



Human Chemokine 4-Plex Panel 1				
	IP-10	ITAC	MCP-1	MIP-3β
LoD (pg/ml)	0.006	0.028	0.696	0.091
LLoQ (pg/ml)	0.586	0.195	1.172	0.781
ULoQ (pg/ml)	300	100	600	400